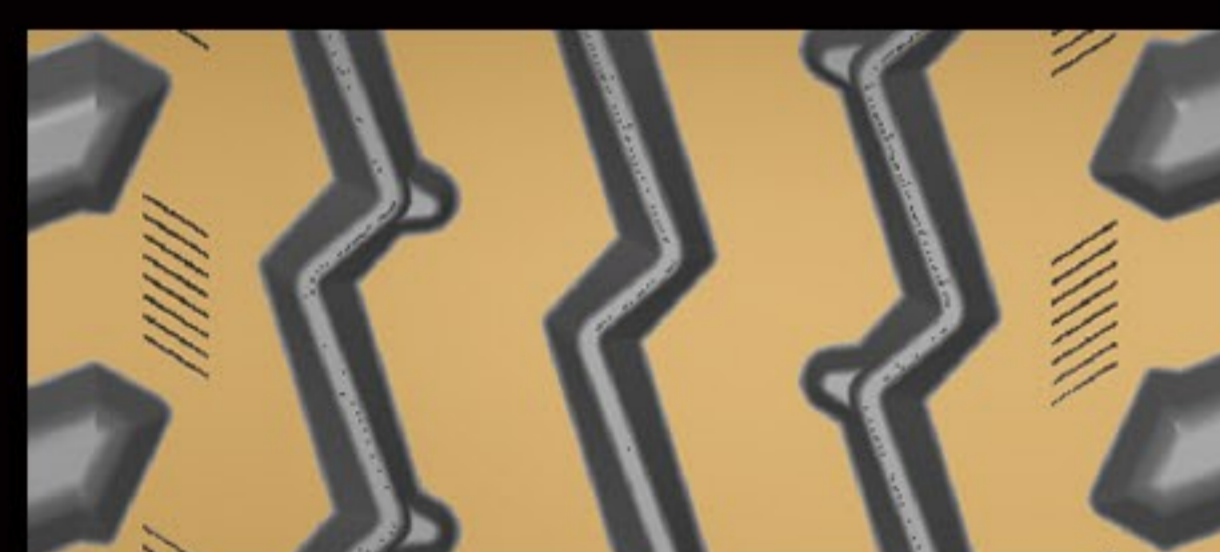




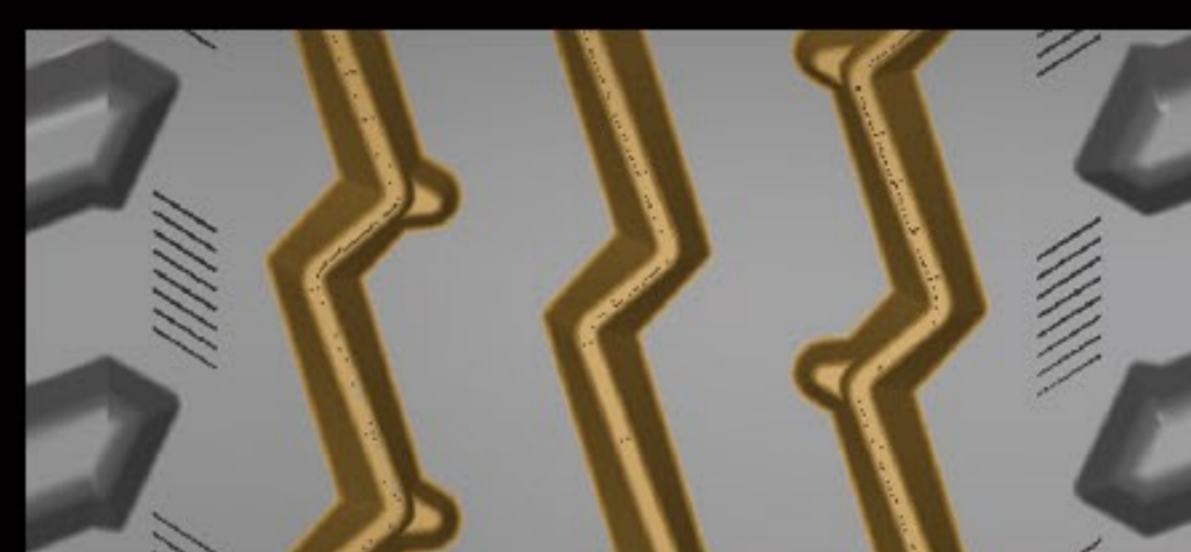
APM 9000



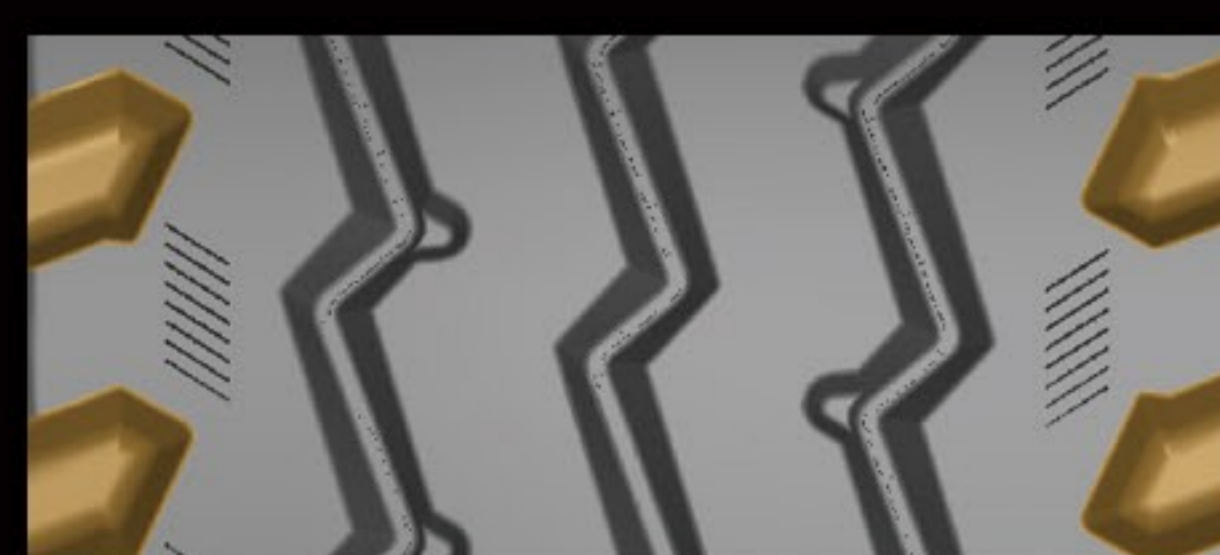
All Position/Mixed Service



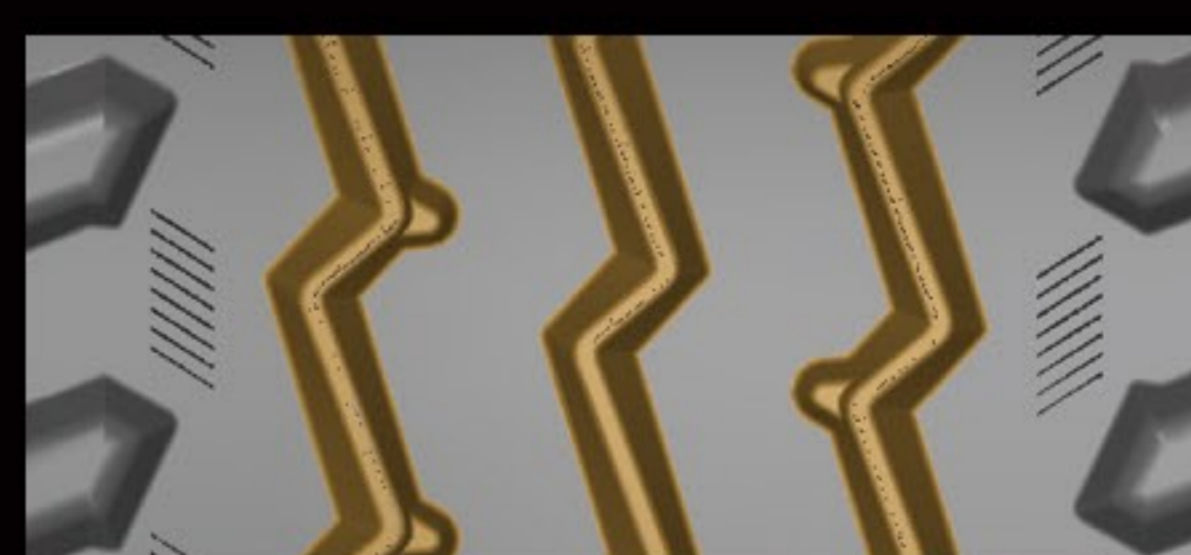
Rugged four-rib design with special groove shape to combat stone retention for long mileage and retreadability.



V-Channels and Groove Bottom Protectors, Defend the casing against stone retention and stone-drilling.



Shoulder lugs provide grip and reduce the tread heat, prolong the life of the tread.



Zigzag groove design for true all-position use.

Size	PR	LI/SI	Overall Dia inch	Section width inch	Tread Depth 32nd	Meas. Rim Width (in)	Max Load		Pressure psi
							Single lbs	Dual lbs	
11R22.5	16(H)	146/143N	41.5	11.0	18	8.25	6610	6005	120
11R24.5	16(H)	149/146N	43.5	11.0	18	8.25	7160	6610	120
255/70R22.5	16(H)	140/137N	36.6	10.0	18	7.50	5510	5070	120