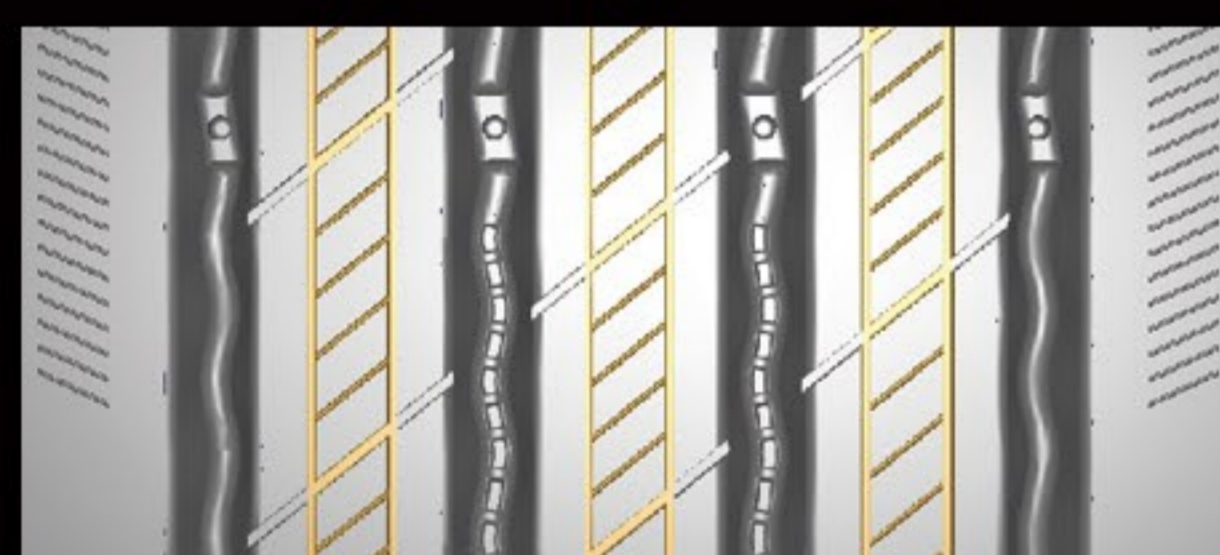




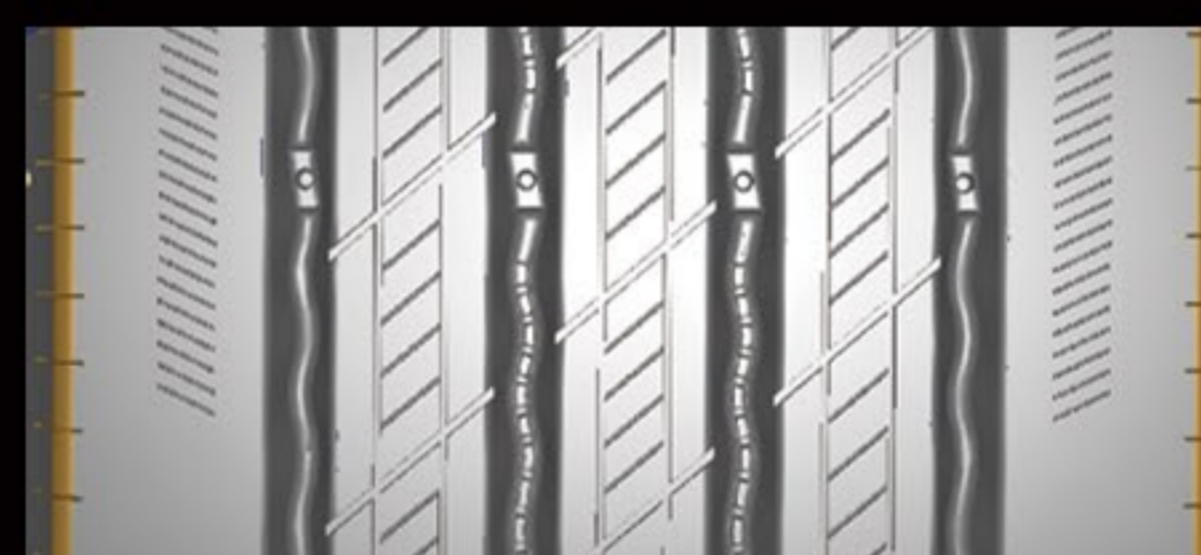
APR 800



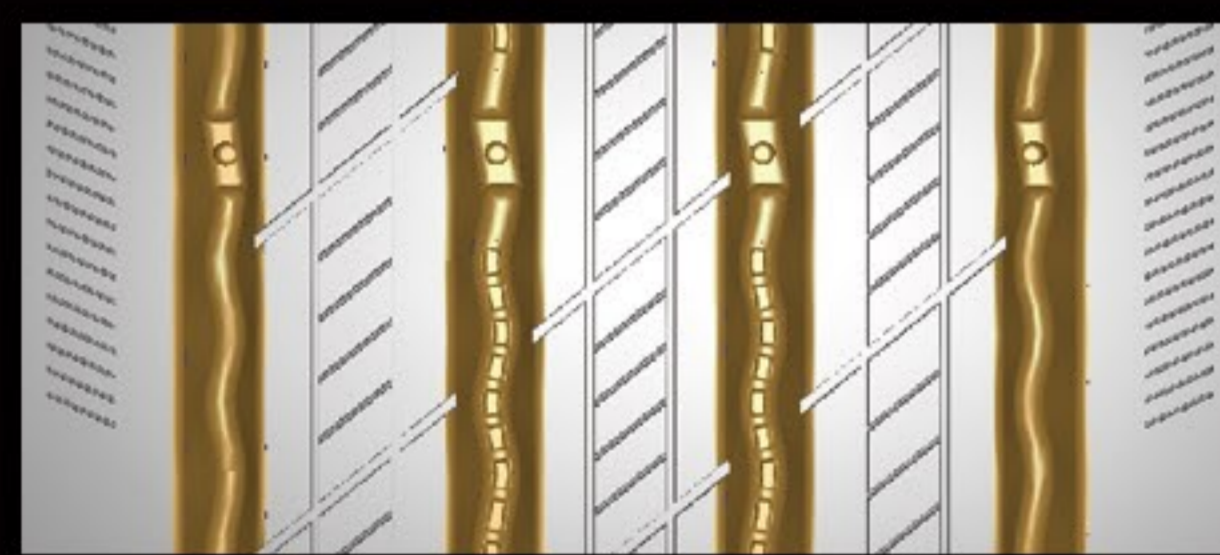
All Position/Regional



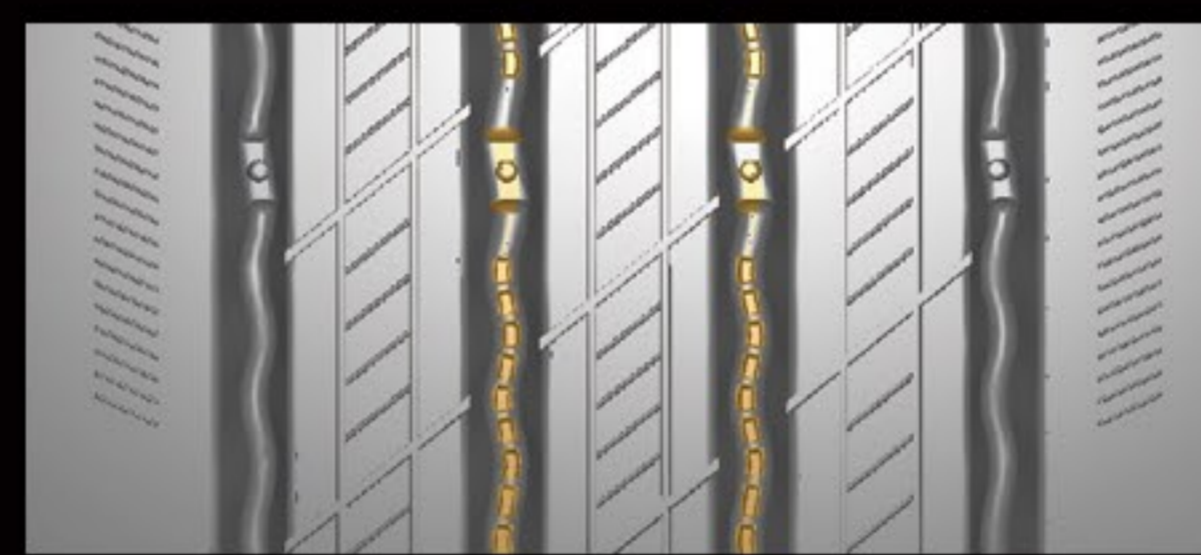
Smaller groove widths add tread material and increase wear resistance to guarantee high mileage performance.



Micro sipe to relieve tire shoulder pressure, prevent uneven wear.



The wave groove wall design can improve the overall rigidity of the pattern.



Stone ejector at the bottom of the main groove in the center can prevent stones from damaging the bottom of the groove and protect the casing.

Size	PR	LI/SI	Overall Dia inch	Section width inch	Tread Depth 32nd	Meas. Rim Width (in)	Max Load		Pressure psi
							Single lbs	Dual lbs	
11R22.5	16(H)	146/143M	41.5	11.0	18	8.25	6610	6005	120
11R24.5	16(H)	149/146M	43.5	11.0	18	8.25	7160	6610	120
215/75R17.5	16(H)	135/133L	30.2	8.3	16	6.00	4805	4540	123
225/70R19.5	14(G)	128/126M	31.9	8.9	18	6.75	3970	3750	110
235/75R17.5	18(J)	143/141L	31.4	9.2	16	6.75	6005	5675	127
245/70R17.5	18(J)	143/141K	31.0	9.8	16	7.50	6005	5675	130
245/70R19.5	16(H)	135/133M	33.0	9.8	18	7.50	4805	4540	120
255/70R22.5	16(H)	140/137M	36.6	10.0	18	7.50	5510	5070	120
285/75R24.5	14(G)	144/141M	41.3	11.1	18	8.25	6175	5675	110
295/75R22.5	14(G)	144/141L	39.9	11.7	18	9.00	6175	5675	110
295/75R22.5	16(H)	146/143M	39.9	11.7	18	9.00	6610	6005	120
315/80R22.5	20(L)	157/154M	42.4	12.3	19	9.00	9090	8270	130