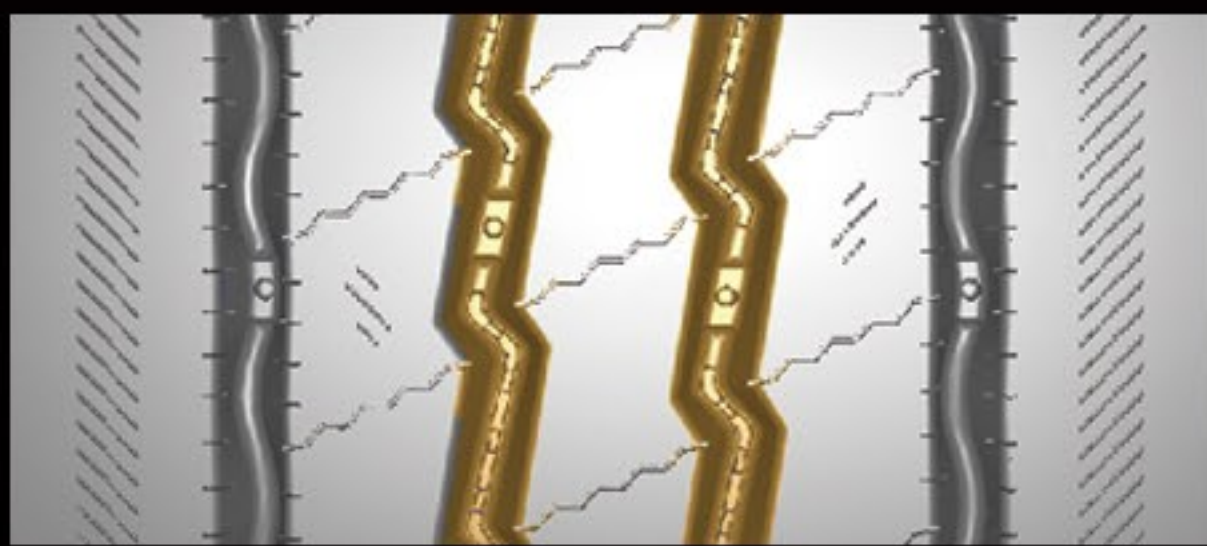




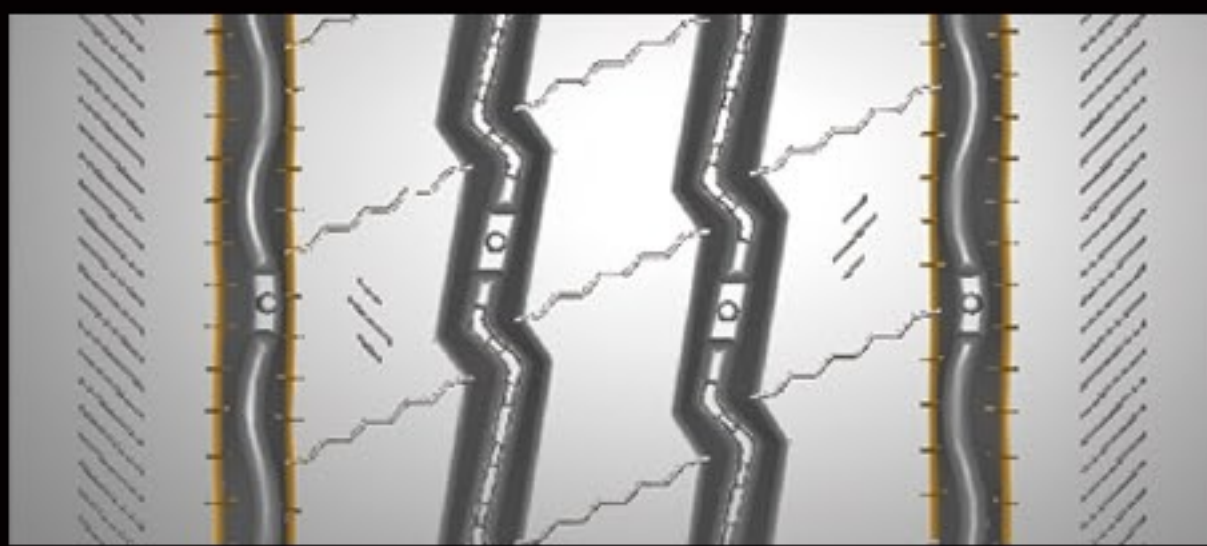
# STR 500



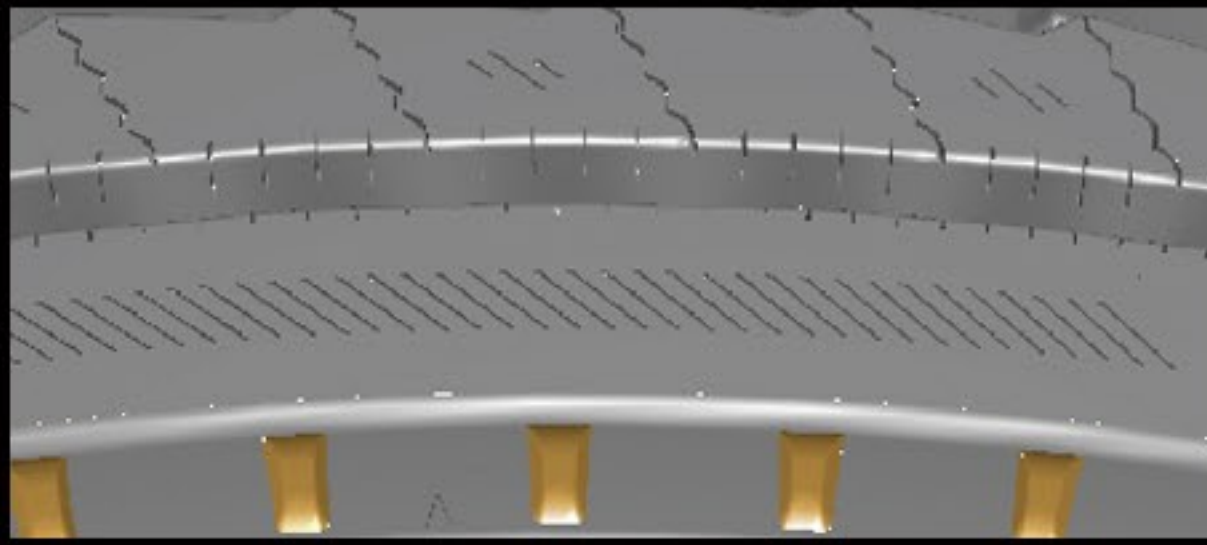
## Steer/Regional



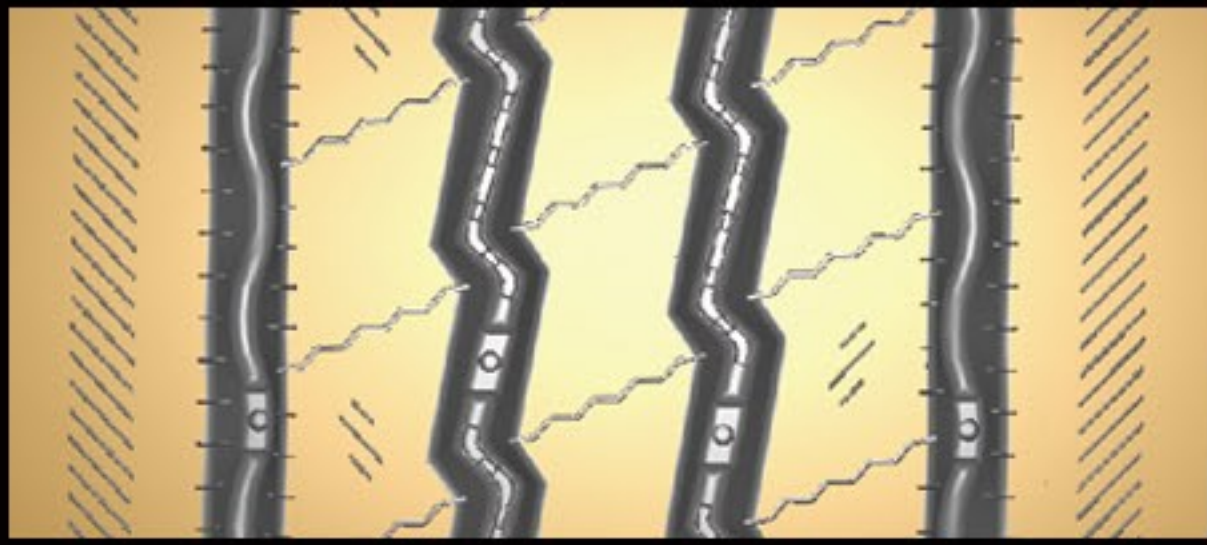
Zig-zag grooves help increase traction in new and worn tire conditions.



Micro sipes located in the groove walls can reduce irregular tire wear.



Shoulder lugs minimize irregular tread wear and extend tire life.



The five-rib design ensures even wear and improves handling.

Size	PR	LI/SI	Overall Dia inch	Section width inch	Tread Depth 32nd	Meas.Rim Width (in)	Max Load		Pressure psi
							Single lbs	Dual lbs	
11R22.5	14(G)	144/142M	41.5	11.0	18	8.25	6175	5840	105
11R24.5	14(G)	146/143M	43.5	11.0	18	8.25	6610	6005	105
285/75R24.5	14(G)	144/141M	41.3	11.1	18	8.25	6175	5675	110
295/75R22.5	16(H)	146/143L	39.9	11.7	18	9.00	6610	6005	120
295/75R22.5	14(G)	144/141L	39.9	11.7	18	9.00	6175	5675	110