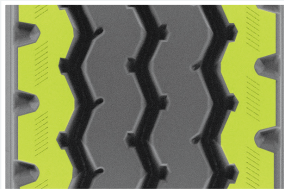


AvanTech™

APM 800

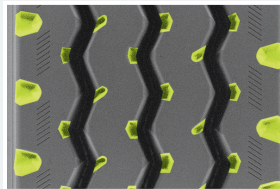
MIXED SERVICE/ALL-POSITION

INTRODUCING the APM 800, the ultimate mixed service/all-position commercial truck tire designed for superior performance and durability. Our continuous shoulder design combats tread squirm for long tread life, ensuring that your tires last longer and perform better. With multiple gripping angles that provide biting edges, the APM 800 also helps promote wet traction, giving you the grip you need in any weather condition. And with stone ejector platforms that help protect belts from potential damage, you can enjoy peace of mind knowing that your tires are protected. The APM 800's tread is also designed with variable-pitch noise treatment, helping to deliver a quiet ride and improving durability and traction. Whether you're hauling cargo or driving through mixed service environments, the APM 800 delivers the ultimate in performance, durability, and reliability.



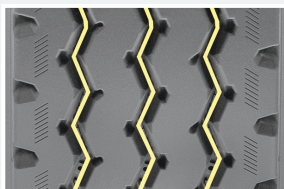
CONTINUOUS SHOULDER DESIGN

This tire's continuous shoulder design enhances stability and ensures longer tread life.



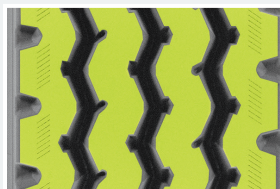
MULTIPLE GRIP ANGLES

Multiple gripping angles provide biting edges that help promote wet traction.



STONE EJECTORS

The stone ejectors remove stones from the tread and help to prevent cracks in the bottom of the grooves.



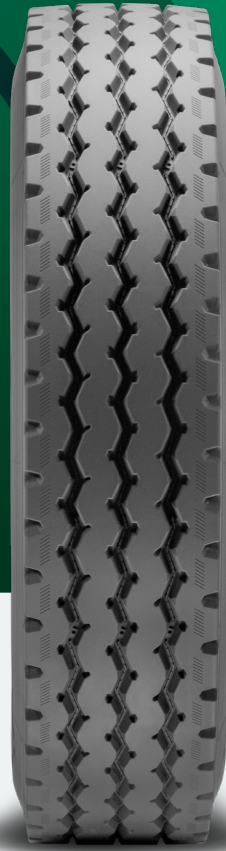
VARIABLE PITCH

The tread is designed with variable pitch to deliver a quiet ride and improve durability and traction.



KTM#4

KTM#4 is a tread compound that provides well-balanced performance with an emphasis on cut & chip resistance for on/off-road use.



APM 800 SIZE DATA

ARTICLE NUMBER	SIZE	LOAD INDEX	LOAD RANGE	PLY RATING	SPEED RATING	RIM WIDTH RANGE	TREAD DEPTH	MAX LOAD		MAX INFLATION	TIRE SECTION WIDTH	TIRE OUTSIDE DIAMETER	WEIGHT
								SINGLE	DUAL				
					mph	in.	32nds	lbs.	lbs.	psi	in.	in.	lbs.
838155	11R22.5	146/143	H	16	N (87 mph)	7.50-8.25	17	6610	6005	120	11.0	41.5	116.6
838230	11R24.5	149/146	H	16	N (87 mph)	7.50-8.25	17	7160	6610	120	11.0	43.5	124.8
838346	255/70R22.5	140/137	H	16	N (87 mph)	6.75-7.50-8.25	17	5510	5070	120	10.0	36.6	85.8
838360	275/70R22.5	148/145	J	18	N (87 mph)	7.50-8.25	17	6940	6395	130	10.9	37.7	108.0
838513	315/80R22.5	157/154	L	20	N (87 mph)	9.00-9.75	20	9090	8270	130	12.3	42.4	144.8
838537	385/65R22.5	160	L	20	M (81 mph)	11.75-12.25	19	9920	/	130	15.3	42.2	150.1
838544	425/65R22.5	165	L	20	N (87 mph)	12.25-13.00-14.00	21	11400	/	120	16.6	44.3	202.8