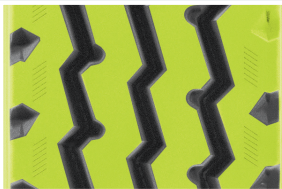


AvanTech™

APM 900

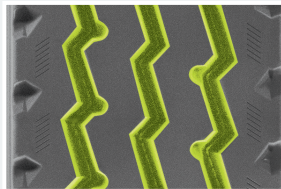
MIXED SERVICE/ALL-POSITION

INTRODUCING the APM 900, the ultimate mixed service/all-position commercial truck tire designed for superior performance and durability. Our rugged four-rib design with a special groove shape combats stone retention, ensuring long mileage and retreadability. With V-Channels and groove bottom protectors, the APM 900 also defends the casing against stone retention and stone drilling, providing you with a tire that is built to last. The shoulder lugs provide grip and reduce the tread heat, prolonging the life of the tread. The zig-zag groove design makes it suitable for true all-position use, providing you with the versatility you need in any driving condition. Whether you're hauling cargo or driving through mixed service environments it delivers the ultimate in performance, durability, and reliability.



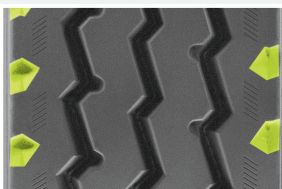
4-RIB DESIGN

This rugged 4-rib design with a special groove shape combats stone retention for longer mileage and tread life.



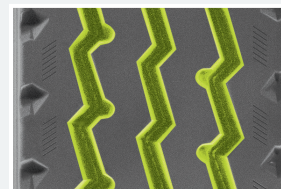
GROOVE PROTECTORS

V-Channels and groove bottom protectors defend the casing against stone retention and stone drilling.



RUGGED SHOULDER LUGS

Shoulder lugs provide grip and reduce tread heat, prolonging the life of the tire.



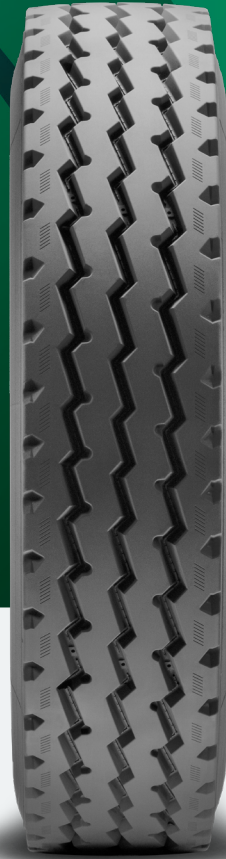
ZIG-ZAG GROOVE DESIGN

The zig-zag groove design enables true all-position use.



KTM#4

KTM#4 is a tread compound that provides well-balanced performance with an emphasis on cut & chip resistance for on/off-road use.



APM 900 SIZE DATA

ARTICLE NUMBER	SIZE	LOAD INDEX	LOAD RANGE	PLY RATING	SPEED RATING	RIM WIDTH RANGE	TREAD DEPTH	MAX LOAD		MAX INFLATION	TIRE SECTION WIDTH	TIRE OUTSIDE DIAMETER	WEIGHT
					mph			in.	32nds				
838179	11R22.5	146/143	H	16	N (87 mph)	7.50-8.25	17	6610	6005	120	11.0	41.5	115.7
838254	11R24.5	149/146	H	16	N (87 mph)	7.50-8.25	17	7160	6610	120	11.0	43.5	124.8
838353	255/70R22.5	140/137	H	16	N (87 mph)	6.75-7.50-8.25	17	5510	5070	120	10.0	36.6	85.8