



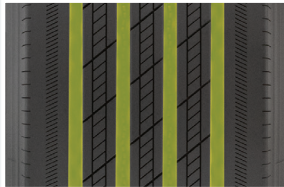
# AvanTech™



# APR 800

REGIONAL/ALL-POSITION

**INTRODUCING** the APR 800, the ultimate regional/all-position commercial truck tire designed for superior performance and durability. With smaller groove widths that add tread material and increase wear resistance, you can expect high mileage performance from the APR 800. Our micro-sipe technology relieves tire shoulder pressure and prevents uneven wear, giving you a tire that lasts longer and performs better. The wave groove wall design also improves the overall rigidity of the pattern, providing you with better control and handling on the road. With stone ejectors at the bottom of the main grooves, you can be sure that your tires are protected from damage, ensuring long-lasting durability and reliability.



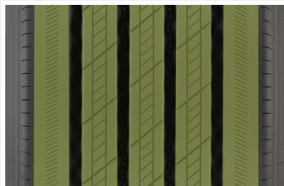
#### 4 WIDE GROOVES

The 4 wide and straight grooves effectively evacuate water, enhancing wet traction and driving confidence.



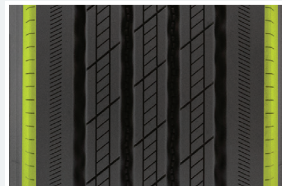
#### STONE EJECTORS

The wave design within a straight groove wall helps prevent stone entrapment and improves tread pattern stiffness, ensuring on-road stability.



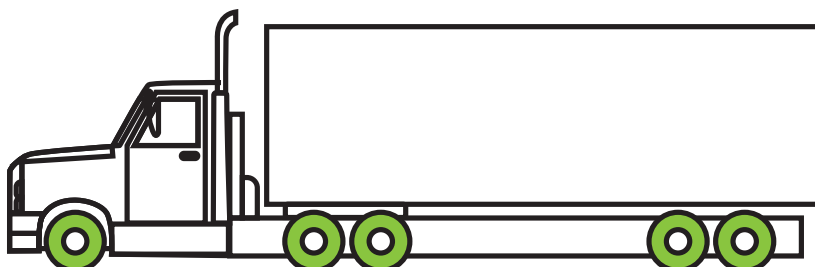
#### 5-RIB PATTERN

The 5-rib pattern with straight grooves promotes even wear and improved rolling resistance.



#### EVEN WEAR SIPES

These micro-sipes are used to relieve tire shoulder pressure and prevent uneven wear.



# KTM #5

**KTM#5** is a tread compound that provides well-balanced performance with an emphasis on high wear resistance for improved mileage and low rolling resistance for excellent fuel economy.



## APR 800 SIZE DATA

ARTICLE NUMBER	SIZE	LOAD INDEX	LOAD RANGE	PLY RATING	SPEED RATING	RIM WIDTH RANGE	TREAD DEPTH	MAX LOAD		MAX INFLATION	TIRE SECTION WIDTH	TIRE OUTSIDE DIAMETER	WEIGHT
								SINGLE	DUAL				
					mph	in.	32nds	lbs.	lbs.	psi	in.	in.	lbs.
838148	11R22.5	146/143	H	16	M (81 mph)	7.50-8.25	17	6610	6005	120	11.0	41.5	112.2
838216	11R24.5	149/146	H	16	M (81 mph)	7.50-8.25	17	7160	6610	120	11.0	43.5	121.0
838261	215/75R17.5	135/133	H	16	L (75 mph)	6.00-6.75	15	4805	4540	123	8.3	30.2	58.9
838285	225/70R19.5	128/126	G	14	M (81 mph)	6.00-6.75-6.75RW	17	3970	3750	110	8.9	31.9	65.5
838292	235/75R17.5	143/141	J	18	L (75 mph)	6.75-7.50	15	6005	5675	127	9.2	31.4	60.8
838308	245/70R17.5	143/141	J	18	K (68 mph)	6.75-7.50	15	6005	5675	130	9.8	31.0	63.9
838315	245/70R19.5	135/133	H	16	M (81 mph)	6.75-7.50-7.50RW	17	4805	4540	120	9.8	33.0	72.3
838339	255/70R22.5	140/137	H	16	M (81 mph)	6.75-7.50-8.25	17	5510	5070	120	10.0	36.6	85.3
838414	285/75R24.5	144/141	G	14	M (81 mph)	7.50-8.25-9.00	17	6175	5675	110	11.1	41.3	113.5
838421	295/75R22.5	144/141	G	14	L (75 mph)	8.25-9.00	17	6175	5675	110	11.7	39.9	109.3
838506	295/75R22.5	146/143	H	16	M (81 mph)	8.25-9.00	17	6610	6005	120	11.7	39.9	109.3
838520	315/80R22.5	157/154	L	20	M (81 mph)	9.00-9.75	18	9090	8270	130	12.3	42.4	130.3