

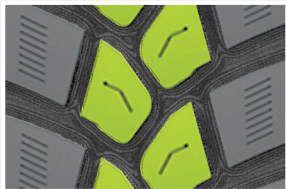


AvanTech™

DRM 600

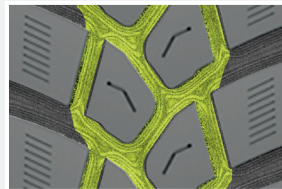
MIXED SERVICE/DRIVE

INTRODUCING the DRM 600, the ultimate mixed service/drive tire for any driving condition. Our innovative tread pattern is designed to provide outstanding traction and excellent on and off-road wear performance, ensuring maximum grip and durability. The optimized gripper edges also minimize stone retention and provide optimal off-road grip, giving you the confidence to take on any terrain. The DRM 600's deep tread ensures long life and outstanding traction, while its wide tread dimension promotes high performance both on/off asphalt roads to provide better mileage. The DRM 600 delivers superior performance and long-lasting durability.



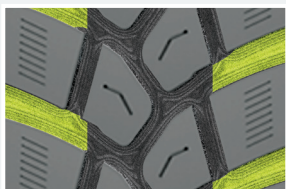
ON/OFF-ROAD PERFORMANCE

This innovative tread pattern provides outstanding traction and excellent on and off-road wear performance.



GRIPPER EDGES

These optimized scored edges for optimal off-road grip also minimize stone retention.



TRACTION DESIGN

This tire features a deep tread design for long life and outstanding traction.



DIMENSIONAL TREAD

The wide tread dimension promotes high performance both off-road and on asphalt surfaces to provide better mileage.



KTM#4

KTM#4 is a tread compound that provides well-balanced performance with an emphasis on cut & chip resistance for on/off-road use.



DRM 600 SIZE DATA

ARTICLE NUMBER	SIZE	LOAD INDEX	LOAD RANGE	PLY RATING	SPEED RATING	RIM WIDTH RANGE	TREAD DEPTH	MAX LOAD		MAX INFLATION	TIRE SECTION WIDTH	TIRE OUTSIDE DIAMETER	WEIGHT
								SINGLE	DUAL				
					mph	in.	32nds	lbs.	lbs.	psi	in.	in.	lbs.
838162	11R22.5	146/143	H	16	K (68 mph)	8.25	28	6610	6005	120	11.0	41.9	
838247	11R24.5	149/146	H	16	K (68 mph)	8.25	28	7160	6610	120	11.0	43.9	