

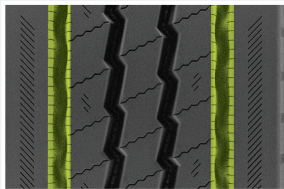
AvanTech™



TRR 700

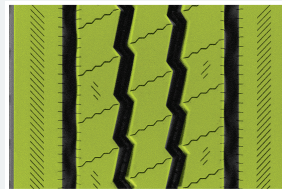
REGIONAL/TRAILER

INTRODUCING the TRR 700, the ultimate regional/trailer tire designed to provide superior performance and durability in any condition. With inner grooves for optimum protection against stone retention, you can enjoy peace of mind knowing that your tires are protected from damage. The optimized footprint of the TRR 700 promotes uniform wear and prolongs the service life of the tire, ensuring that you get the most out of your investment. The groove design prevents stone retention and protects the casing, providing you with a tire that is built to last. The TRR 700's wide and solid shoulder design also improves mileage and handling, giving you the control and stability you need on the road.



RESISTANT INNER GROOVES

Inner grooves provide optimal resistance against stone retention.



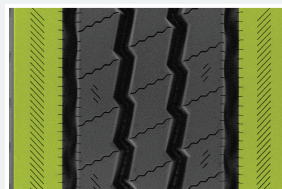
OPTIMIZED FOOTPRINT

Designed for uniform tread wear, this optimizes its carbon footprint and prolongs the life of the tire.



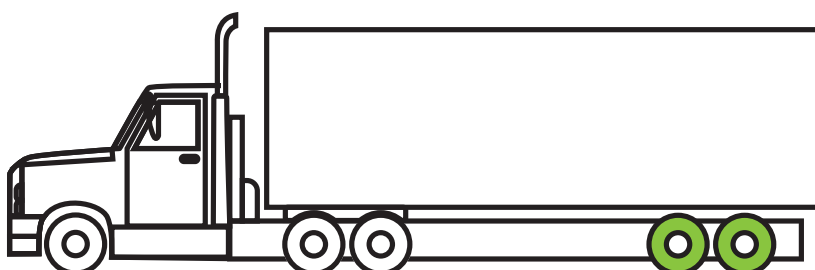
SMART GROOVES

A combination of straight and curved grooves protects the casing and prevents stones from lodging in the tread.



WIDE SHOULDER DESIGN

The wide, solid shoulder design improves mileage and handling.



KTM #6

KTM#6 is a tread compound that provides well-balanced performance with an emphasis on low rolling resistance for excellent fuel economy.



TRR 700 SIZE DATA

| ARTICLE NUMBER | SIZE | LOAD INDEX | LOAD RANGE | PLY RATING | SPEED RATING | RIM WIDTH RANGE | TREAD DEPTH | MAX LOAD | | MAX INFLATION | TIRE SECTION WIDTH | TIRE OUTSIDE DIAMETER | WEIGHT |
|----------------|-------------|------------|------------|------------|--------------|-----------------|-------------|----------|------|---------------|--------------------|-----------------------|--------|
| | | | | | | | | SINGLE | DUAL | | | | |
| | | | | | mph | in. | 32nds | lbs. | lbs. | psi | in. | in. | lbs. |
| 838131 | 11R22.5 | 144/142 | G | 14 | M (81 mph) | 7.50-8.25 | 13 | 6175 | 5840 | 105 | 11.0 | 41.5 | 104.7 |
| 838209 | 11R24.5 | 146/143 | G | 14 | M (81 mph) | 7.50-8.25 | 13 | 6610 | 6005 | 105 | 11.0 | 43.5 | 113.1 |
| 838407 | 285/75R24.5 | 144/141 | G | 14 | M (81 mph) | 7.50-8.25-9.00 | 13 | 6175 | 5675 | 110 | 11.1 | 41.3 | 105.4 |
| 838490 | 295/75R22.5 | 144/141 | G | 14 | L (75 mph) | 8.25-9.00 | 13 | 6175 | 5675 | 110 | 11.7 | 39.9 | 99.2 |